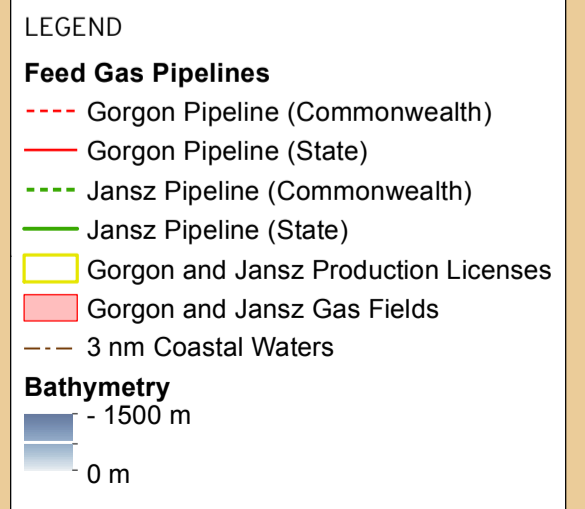
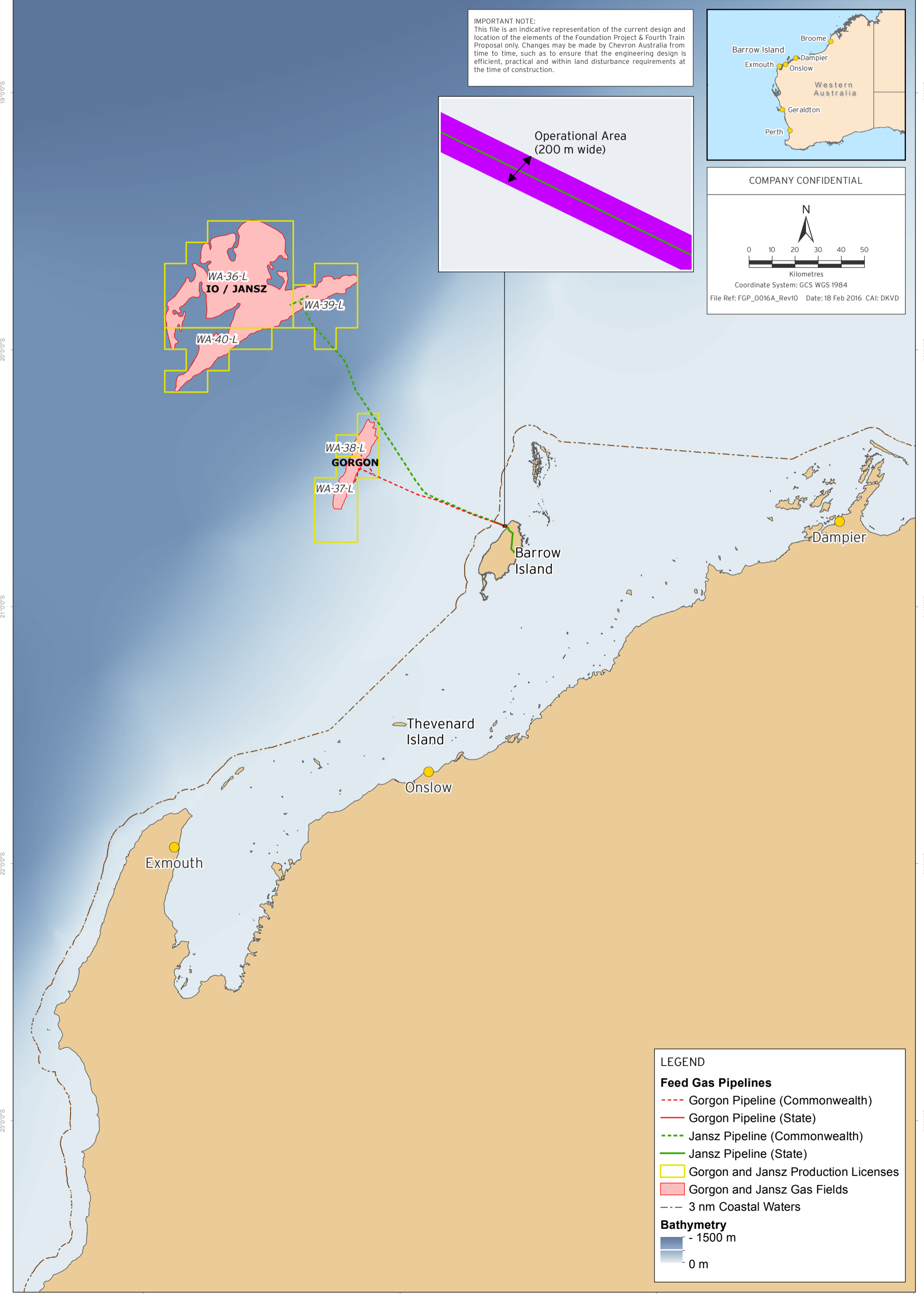
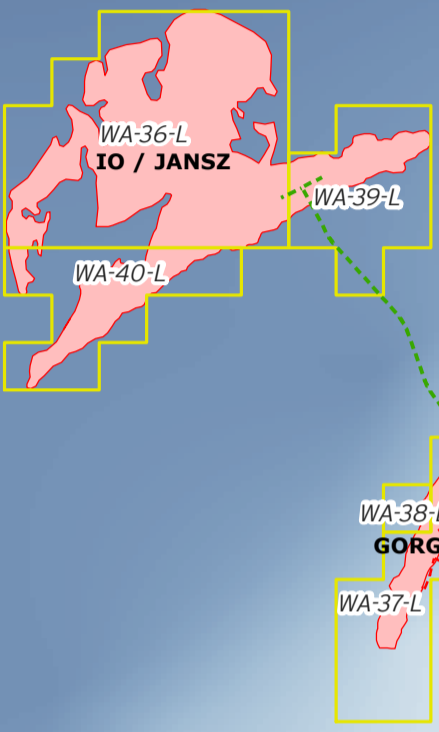
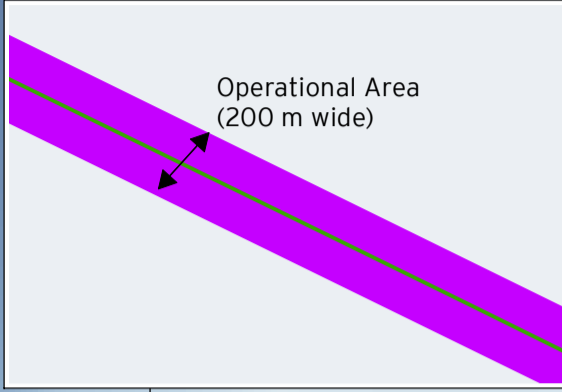
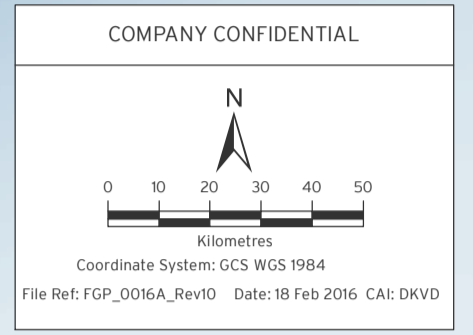


LOCATION OF THE GORGON AND JANSZ FEED GAS PIPELINE SYSTEM



114°0'0"E 115°0'0"E 116°0'0"E 117°0'0"E

IMPORTANT NOTE:
 This file is an indicative representation of the current design and location of the elements of the Foundation Project & Fourth Train Proposal only. Changes may be made by Chevron Australia from time to time, such as to ensure that the engineering design is efficient, practical and within land disturbance requirements at the time of construction.



114°0'0"E 115°0'0"E 116°0'0"E 117°0'0"E

19°0'0"S 20°0'0"S 21°0'0"S 22°0'0"S 23°0'0"S

19°0'0"S 20°0'0"S 21°0'0"S 22°0'0"S 23°0'0"S