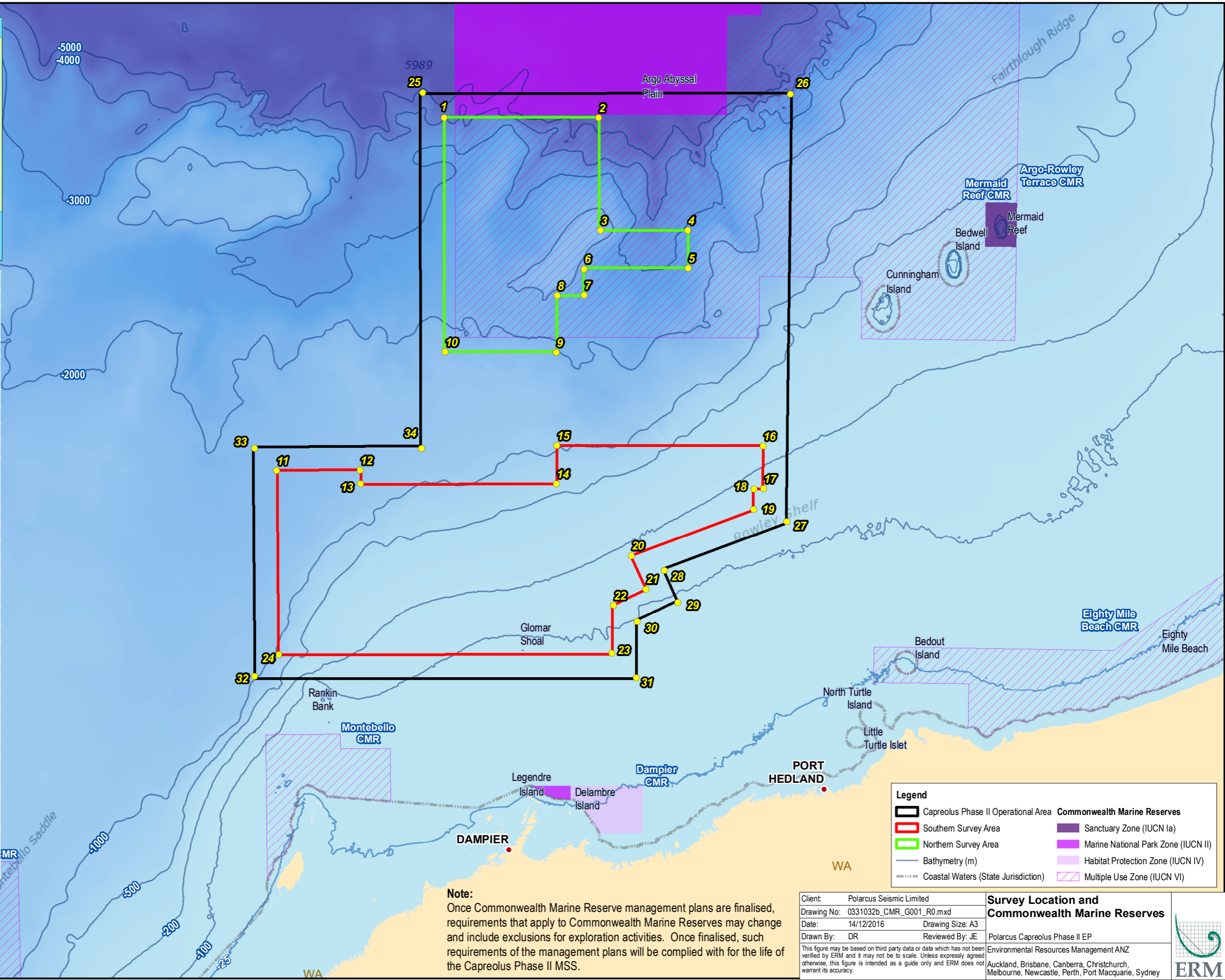




Survey Coordinates (GDA94z50)

ID	Easting	Northing
1	116.33841	-16.50170
2	117.24934	-16.50259
3	117.26014	-17.14192
4	117.77564	-17.14060
5	117.77903	-17.35607
6	117.16320	-17.36231
7	117.16334	-17.51316
8	117.00612	-17.51562
9	117.00114	-17.83646
10	116.33868	-17.83295
11	115.33256	-18.50189
12	115.83180	-18.50324
13	115.83379	-18.57985
14	117.00114	-18.58346
15	117.00365	-18.36798
16	118.22972	-18.36641
17	118.23395	-18.60814
18	118.17874	-18.61089
19	118.17702	-18.72580
20	117.44911	-18.99230
21	117.53528	-19.18119
22	117.34147	-19.27501
23	117.33194	-19.54793
24	115.33724	-19.54776
25	116.21241	-16.35818
26	118.37863	-16.36277
27	118.37317	-18.79696
28	117.64516	-19.07561
29	117.72621	-19.25845
30	117.48549	-19.36608
31	117.47839	-19.68658
32	115.19083	-19.67048
33	115.20481	-18.37381
34	116.19572	-18.38058



Note:
Once Commonwealth Marine Reserve management plans are finalised, requirements that apply to Commonwealth Marine Reserves may change and include exclusions for exploration activities. Once finalised, such requirements of the management plans will be complied with for the life of the Capreolus Phase II MSS.

Legend

- Capreolus Phase II Operational Area
- Southern Survey Area
- Northern Survey Area
- Bathymetry (m)
- Coastal Waters (State Jurisdiction)
- Commonwealth Marine Reserves
- Sanctuary Zone (IUCN Ia)
- Marine National Park Zone (IUCN II)
- Habitat Protection Zone (IUCN IV)
- Multiple Use Zone (IUCN VI)

Survey Location and Commonwealth Marine Reserves

Client: Polarcus Seismic Limited
 Drawing No: 0331032b_CMR_G001_R0.mxd
 Date: 14/12/2016 Drawing Size: A3
 Drawn By: DR Reviewed By: JE

Polarcus Capreolus Phase II EP
 Environmental Resources Management ANZ
 Auckland, Brisbane, Canberra, Christchurch, Melbourne, Newcastle, Perth, Port Macquarie, Sydney

